

FOR LEASE > RETAIL SPACE



PFM Retail Center

1441 S. GUILFORD ROAD, CARMEL, INDIANA 46032



Depicts sample tenant signage



PFM Retail Center > Retail Space

- > 3,813 SF endcap available
- > Corner of 116th and Guilford (traffic light)
- > Fully re-modeled in 2010
- > Easy access and convenient on-site parking
- > Strong demographics in affluent Carmel
- > Space delivered in white box condition
- > Average Daily Traffic Count: 16,440
- > Lease Rate: \$16.00/SF NNN (Est. \$3.35/SF)

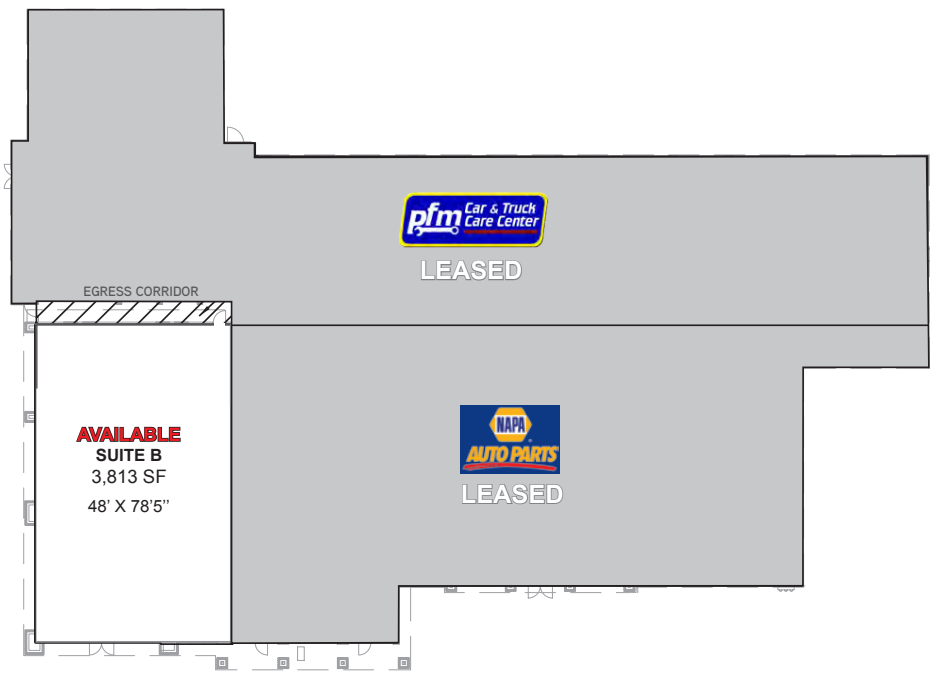
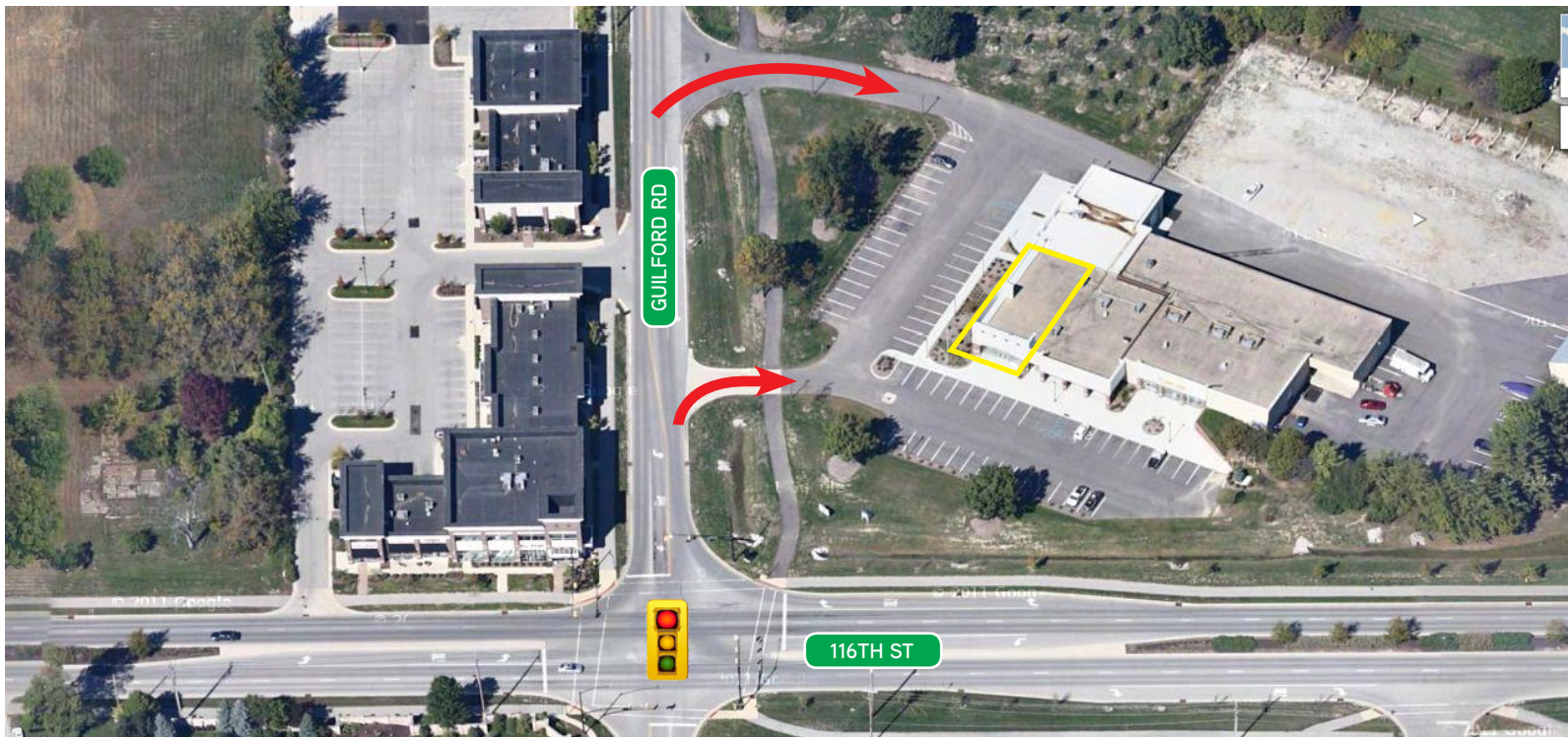
PaulDickTeam.com



Paul Dick, Senior Advisor
Direct 317 663 6540
Mobile 317 698 8055
paul.dick@colliers.com

Kevin Dick, Advisor
Direct 317 663 6544
Mobile 317 213 6692
kevin.dick@colliers.com

COLLIERS INTERNATIONAL
900 East 96th Street, Suite 350
Indianapolis, IN 46240
www.colliers.com



Contact Us

Paul Dick, Senior Advisor
 Direct 317 663 6540
 Mobile 317 698 8055
paul.dick@colliers.com

Kevin Dick, Advisor
 Direct 317 663 6544
 Mobile 317 213 6692
kevin.dick@colliers.com

DEMOGRAPHICS

2010	1 Mile	3 Mile	5 Mile
Population	7,176	57,931	150,250
Households	2,743	22,763	60,220
HH Income	\$82,791	\$109,045	\$111,412

COLLIERS INTERNATIONAL
 900 East 96th Street, Suite 350
 Indianapolis, IN 46240
www.colliers.com

The information contained herein was obtained from sources we consider reliable. We cannot be responsible for errors, omissions, prior sale or lease, withdrawal from the market or change in price. Seller and broker make no representation as to the environmental condition of the property and recommend the lessee's/purchaser's independent investigation.

