

FOR LEASE > RETAIL SPACE



Carmel Retail Court

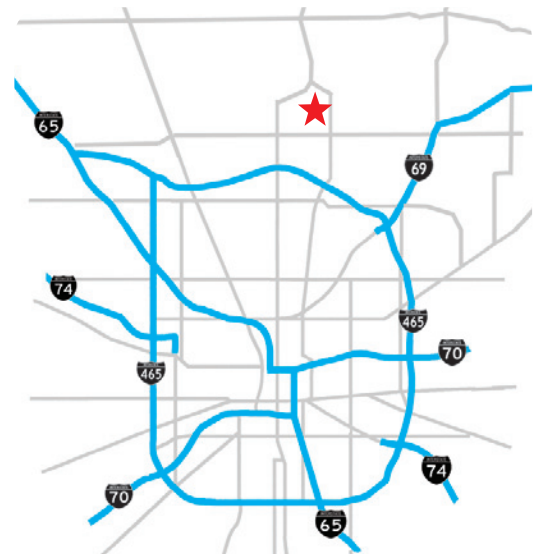
301 E. CARMEL DRIVE, CARMEL, INDIANA 46032



Carmel Retail Court > Retail Space

- > 841 - 4,657 SF suites available
- > Great daytime population
- > Tremendous demographics in affluent Carmel
- > Central Carmel location
- > Average daily traffic count: 19,035
- > Lease Rate: \$14.00/SF NNN (Est. \$4.56/SF)

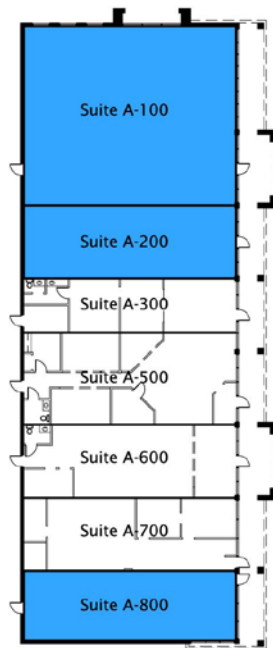
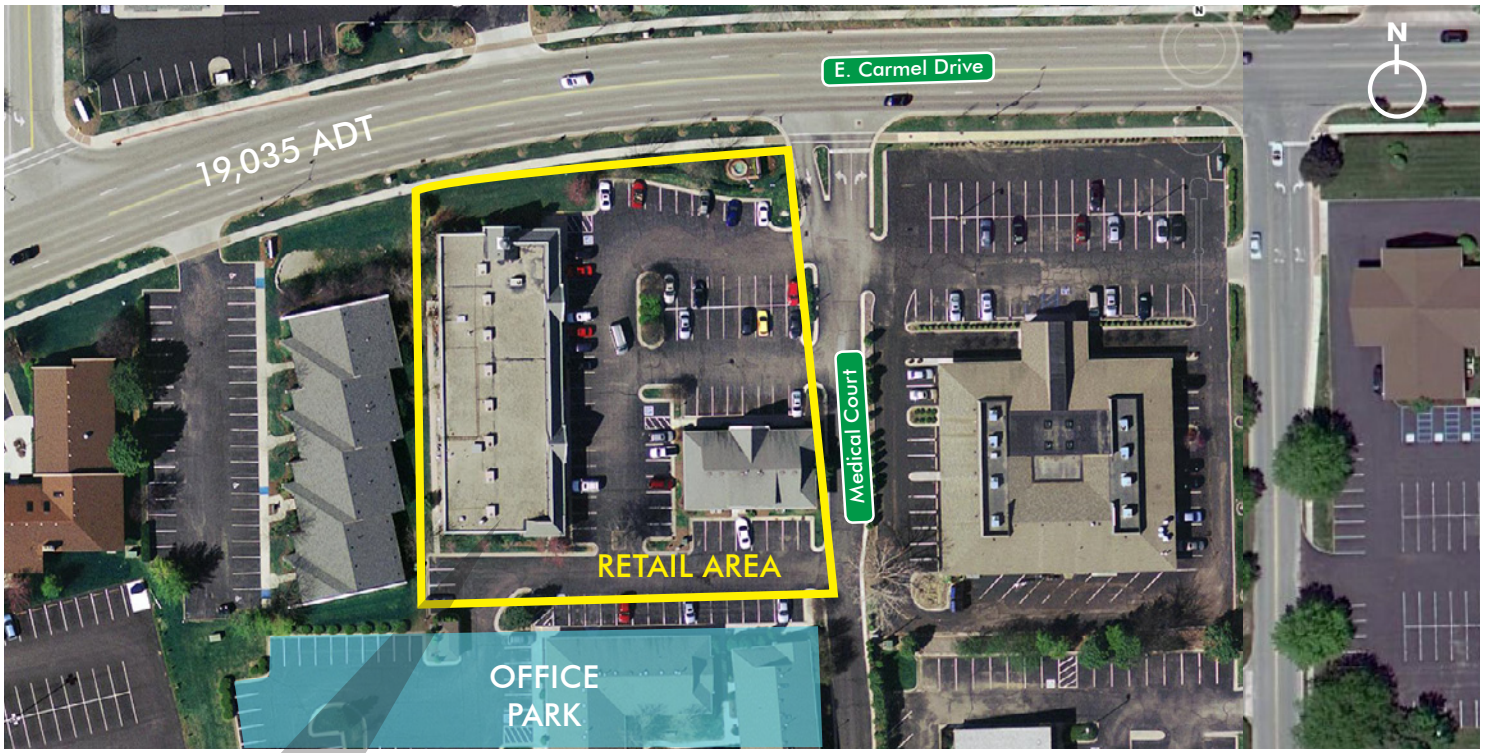
PaulDickTeam.com



Kevin Dick, Advisor
Direct 317.663.6544
Mobile 317.213.6692
kevin.dick@colliers.com

Paul Dick, Senior Advisor
Direct 317.663.6540
Mobile 317.698.8055
paul.dick@colliers.com

COLLIERS INTERNATIONAL
900 East 96th Street, Suite 350
Indianapolis, IN 46240
www.colliers.com



AVAILABLE RETAIL SPACES:

A300	841 SF
A500	1,416 SF
A600	1,200 SF
A700	1,200 SF

DEMOGRAPHICS:

2010	1 Mile	3 Miles	5 Miles
Population	8,434	61,746	143,595
Households	3,620	23,839	56,791
Avg. HH Income	\$97,060	\$115,948	\$113,416

Contact Us

Kevin Dick, Advisor
 Direct 317.663.6544
 Mobile 317.213.6692
kevin.dick@colliers.com

Paul Dick, Senior Advisor
 Direct 317.663.6540
 Mobile 317.698.8055
paul.dick@colliers.com

COLLIERS INTERNATIONAL
 900 East 96th Street, Suite 350
 Indianapolis, IN 46240
www.colliers.com

The information contained herein was obtained from sources we consider reliable. We cannot be responsible for errors, omissions, prior sale or lease, withdrawal from the market or change in price. Seller and broker make no representation as to the environmental condition of the property and recommend the lessee's/purchaser's independent investigation.

